

Cavity Fixings



Spring Toggles

Zinc

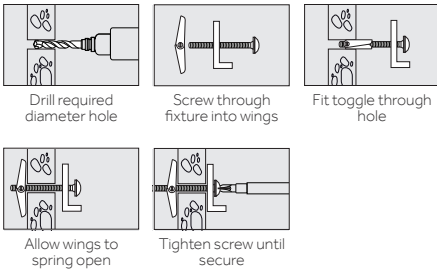


A cavity fixing that is ideal for overhead installations. The wings spread the load over a wider area making them more suited for heavier loads.

11 - 26KG

Technical Data

Substrate	Plasterboard 12.5mm Thickness		
	M3	M5	M6
Screw Ø (mm)	11	14	18
Drill Hole Ø (mm)	20	30	30
Min. Cavity Depth (mm)	0.11	0.22	0.26
Max Rec. Load (kg)	11	22	26



Product Code	Screw Ø x L (mm)	Wall & Fixture Thickness (mm)	Pack Qty (pcs)	Carton Qty (packs)	Pallet Qty (packs)
--------------	------------------	-------------------------------	----------------	--------------------	--------------------

BOX

TOG350	M3 x 50	30	100	12	240
TOG50	M5 x 50	20	100	12	192
TOG575	M5 x 75	45	100	12	192
TOG5100	M5 x 100	70	100	6	96
TOG675	M6 x 75	45	100	6	96

TIMBAG

TOG550B	M5 x 50	20	55	5	600
TOG575B	M5 x 75	45	50	5	600

TIMPAC

TOG550P	M5 x 50	20	4	5	-
TOG575P	M5 x 75	45	4	5	-

Metal Cavity Anchors

Zinc



COMBI

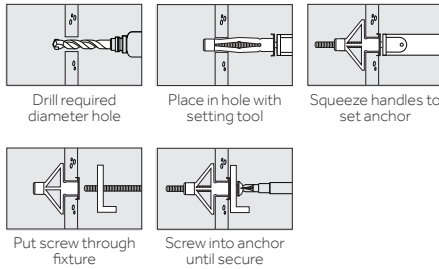


A cavity fixing that is ideal for hanging radiators, brackets, hand rails and shelving units. When installing multiple anchors a setting tool is recommended.

22 - 37KG

Technical Data

Substrate	Plasterboard 12.5mm Thickness		
	M4	M5	M6
Screw Ø (mm)	8.0	10.0	12.0
Drill Hole Ø (mm)	4.0	5.0	6.0
Fixtue Hole Ø (mm)	0.22	0.22	0.37
Rec. Tensile Load (kN)	22	22	37
Max Rec. Load (kg)	22	22	37



Product Code	Screw Ø x L (mm)	Anchor Length (mm)	Grip Board (mm)	Pack Qty (pcs)	Carton Qty (packs)	Pallet Qty (packs)
--------------	------------------	--------------------	-----------------	----------------	--------------------	--------------------

BOX

40038CA	M4 x 45	38	8 - 16	100	20	640
40045CA	M4 x 50	45	16 - 23	100	20	640
50037CA	M5 x 45	37	6 - 13	100	20	480
50052CA	M5 x 60	52	7 - 16	100	10	320
50065CA	M5 x 70	65	17 - 32	100	10	320
60052CA	M6 x 60	52	7 - 16	100	10	320
60065CA	M6 x 70	65	17 - 32	100	10	280

TIMBAG

50037CAB	M5 x 45	37	6-13	70	5	600
50052CAB	M5 x 60	52	7-16	60	5	600
60065CAB	M6 x 70	65	17-32	40	5	600

TIMPAC

50037CAP	M5 x 45	37	6-13	4	5	-
50052CAP	M5 x 60	52	7-16	3	5	-

Setting Tool



A handy and efficient tool used to set cavity anchors.

Product Code	Pack Qty (pcs)	Carton Qty (packs)
--------------	----------------	--------------------

BOX

SETOOL	1	30
--------	---	----

Metal Speed Plugs

Zinc



CROSS



A rapid light duty plasterboard fixing for use in a wide range of applications.

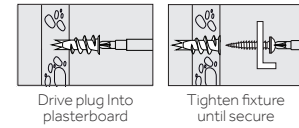
Cross-recess head allows simple installation with a screw driver.

Note: Only metal speed plugs come with screws

5 - 14KG

Technical Data

Substrate	Plasterboard 12.5mm Thickness	
	Metal	Nylon
Type		
Max. Fixture Thickness (mm)	6.0	
Rec. Tensile Load (kN)	0.14	0.05
Max Rec. Load (kg)	14	5



Product Code	Plug Length (mm)	Screw Ø x L (mm)	Pack Qty (pcs)	Carton Qty (packs)	Pallet Qty (packs)
--------------	------------------	------------------	----------------	--------------------	--------------------

BOX

TBAZS	31.5	4.5 x 30	100	20	640
-------	------	----------	-----	----	-----

TUB

TBAZST	31.5	4.5 x 30	300	20	-
--------	------	----------	-----	----	---

TIMBAG

TBAZSB	31.5	4.5 x 30	75	5	870
--------	------	----------	----	---	-----

TIMPAC

TBAZSP	31.5	4.5 x 30	5	5	-
--------	------	----------	---	---	---

Nylon Speed Plugs



Nylon speed plugs are ideal for electrical installation due to non-conductivity of nylon material.

Note: A 6mm pre-drilled hole may be required in harder plasterboards.

Product Code	Plug Length (mm)	Pack Qty (pcs)	Carton Qty (packs)	Pallet Qty (packs)
--------------	------------------	----------------	--------------------	--------------------

BOX

TBAN	42	100	10	30,000
------	----	-----	----	--------