

Washers



Form A Washer (DIN125-A)

Zinc



A traditional and commonly used washer for clamping and spacing applications.

Also available in Stainless Steel

Product Code	Size x Outer Ø (mm)	Thickness (mm)	Pack Qty (pcs)	Carton Qty (packs)	Pallet Qty (packs)
--------------	---------------------	----------------	----------------	--------------------	--------------------

BULK BOX

WA6ZBULK	M6 x 12.5	1.6	20,000	10	-
WA8ZBULK	M8 x 17	1.6	10,000	10	-
WA10ZBULK	M10 x 21	2.0	5,000	10	-
WA12ZBULK	M12 x 24	2.5	2,500	10	-
WA16ZBULK	M16 x 30	3.0	2,000	10	-

BOX

WA4Z	M4 x 9	0.8	1,250	40	1920
WA5Z	M5 x 10	1	1,000	32	1536
WA6Z	M6 x 12.5	1.6	500	32	1536
WA8Z	M8 x 17	1.6	200	32	2048
WA10Z	M10 x 21	2	100	32	2048
WA12Z	M12 x 24	2.5	100	20	1280
WA14Z	M14 x 24	2.5	100	16	768
WA16Z	M16 x 30	3	100	8	512
WA20Z	M20 x 37	3	100	8	512
WA24Z	M24 x 44	4	100	4	256

TIMBAG

6WHAZB	M6 x 12.5	1.6	500	5	870
8WHAZB	M8 x 17	1.6	350	5	870
10WHAZB	M10 x 21	2	200	5	870
12WHAZB	M12 x 24	2.5	130	5	870
16WHAZB	M16 x 30	3	75	5	870
20WHAZB	M20 x 37	3	50	5	870

TIMPAC

6WHAZP	M6 x 12.5	1.6	60	10	-
8WHAZP	M8 x 17	1.6	30	10	-
10WHAZP	M10 x 21	2	20	10	-
12WHAZP	M12 x 24	2.5	15	10	-
16WHAZP	M16 x 30	3	8	10	-
20WHAZP	M20 x 37	3	4	10	-

TYPE - WSH/BAG/PAK

SUB TYPE - WSH01/BAG19/PAK21

Square Plate Washer

Zinc



Provides a large clamping surface and therefore spreading the load of a fastening.

Product Code	Size Hole Ø x L x W x D (mm)	Pack Qty (pcs)	Carton Qty (packs)	Pallet Qty (packs)
--------------	------------------------------	----------------	--------------------	--------------------

BOX

WS8403Z	M8 x 40 x 40 x 3	100	6	192
WS8405Z	M8 x 40 x 40 x 5	100	4	128
WS10403Z	M10 x 40 x 40 x 3	150	4	128
WS10405Z	M10 x 40 x 40 x 5	100	4	128
WS10503Z	M10 x 50 x 50 x 3	100	4	128
WS12503Z	M12 x 50 x 50 x 3	100	4	128
WS16503Z	M16 x 50 x 50 x 3	100	4	128

TIMBAG

1050WHSPZB	M10 x 50 x 50 x 3	30	5	725
1250WHSPZB	M12 x 50 x 50 x 3	30	5	725
1650WHSPZB	M16 x 50 x 50 x 3	30	5	600

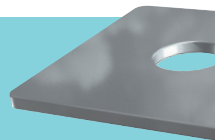
TIMPAC

1050WHSPZP	M10 x 50 x 50 x 3	2	10	-
1250WHSPZP	M12 x 50 x 50 x 3	2	10	-
1650WHSPZP	M16 x 50 x 50 x 3	2	10	-

TYPE - WSH/BAG/PAK

SUB TYPE - WSH05/BAG21/PAK24

Hot Dipped Galvanised Square Plate Washer



See page 58

Form B Washer (DIN125-B)

Zinc



Thinner than a form A, used for clamping and spacing applications.

Also available in Stainless Steel

Product Code	Size x Outer Ø (mm)	Thickness (mm)	Pack Qty (pcs)	Carton Qty (packs)	Pallet Qty (packs)
--------------	---------------------	----------------	----------------	--------------------	--------------------

BULK BOX

WB6ZBULK	M6 x 12	0.8	32,000	10	-
WB8ZBULK	M8 x 17	1	15,000	10	-
WB10ZBULK	M10 x 21	1.25	6,000	10	-
WB12ZBULK	M12 x 24	1.6	5,000	10	-

BOX

WB6Z	M6 x 12	0.8	500	40	2560
WB8Z	M8 x 17	1	200	40	2560
WB10Z	M10 x 21	1.25	100	40	2560
WB12Z	M12 x 24	1.6	100	32	2048
WB16Z	M16 x 30	2	100	16	1024
WB20Z	M20 x 37	2	100	16	768

TYPE - WSH

SUB TYPE - WSH02

Form C Washer (BS4320)

Zinc



A wider outer diameter than the Form A & B. Used to increase the clamping area.

Product Code	Size x Outer Ø (mm)	Thickness (mm)	Pack Qty (pcs)	Carton Qty (packs)	Pallet Qty (packs)
--------------	---------------------	----------------	----------------	--------------------	--------------------

BULK BOX

WC6ZBULK	M6 x 14	1.6	12,000	10	-
WC8ZBULK	M8 x 21	1.6	5,000	10	-
WC10ZBULK	M10 x 24	2	3,000	10	-
WC12ZBULK	M12 x 28	2.5	2,000	10	-

BOX

WC6Z	M6 x 14	1.6	500	16	1024
WC8Z	M8 x 21	1.6	200	20	960
WC10Z	M10 x 24	2	100	32	1536
WC12Z	M12 x 28	2.5	100	16	768
WC16Z	M16 x 34	3	100	8	512
WC20Z	M20 x 39	4	100	8	512

TYPE - WSH

SUB TYPE - WSH03

Penny/Repair Washer (DIN 9054)

Zinc



A large diameter washer ideal for spreading the clamping load, reducing a hole dia and packing out. Sometimes known as a "mudguard" washer.

Also available in Stainless Steel

Product Code	Size x Outer Ø (mm)	Thickness (mm)	Pack Qty (pcs)	Carton Qty (packs)	Pallet Qty (packs)
--------------	---------------------	----------------	----------------	--------------------	--------------------

BULK BOX

WP620ZBULK	M6 x 25	1.5	5,000	10	-
WP625ZBULK	M6 x 25	1.5	3,500	10	-
WP630ZBULK	M6 x 30	1.5	2,500	10	-
WP640ZBULK	M6 x 40	1.5	1,700	10	-
WP825ZBULK	M8 x 25	1.5	3,500	10	-
WP840ZBULK	M8 x 40	1.5	1,700	10	-
WP1025ZBULK	M10 x 25	1.5	3,500	10	-
WP1040ZBULK	M10 x 40	1.5	1,700	10	-
WP1240ZBULK	M12 x 40	1.5	1,700	10	-

BOX

WP525Z	M5 x 25	1.5	100	32	1536
WP620Z	M6 x 20	1.5	100	32	2048
WP625Z	M6 x 25	1.5	100	32	1536
WP630Z	M6 x 30	1.5	100	20	960
WP640Z	M6 x 40	1.5	100	16	768
WP825Z	M8 x 25	1.5	100	32	1536
WP830Z	M8 x 30	1.5	100	20	960
WP840Z	M8 x 40	1.5	100	16	768
WP1025Z	M10 x 25	1.5	100	32	1536
WP1030Z	M10 x 30	1.5	100	20	960
WP1040Z	M10 x 40	1.5	100	16	768
WP1240Z	M12 x 40	1.5	100	16	768

TIMBAG

625WHPZB	M6 x 25	1.5	160	5	870
825WHPZB	M8 x 25	1.5	160	5	870
840WHPZB	M8 x 40	1.5	60	5	600
1040WHPZB	M10 x 40	1.5	60	5	870
1240WHPZB	M12 x 40	1.5	50	5	870

TIMPAC

620WHPZP	M6 x 20	1.5	10	10	-
625WHPZP	M6 x 25	1.5	10	10	-
630WHPZP	M6 x 30	1.5	8	10	-
640WHPZP	M6 x 40	1.5	4	10	-
825WHPZP	M8 x 25	1.5	8	10	-
840WHPZP	M8 x 40	1.5	4	10	-
1040WHPZP	M10 x 40	1.5	4	10	-

TYPE - WSH/BAG/PAK

SUB TYPE - WSH04/BAG20/PAK22

Spring Washer (DIN 7980)

Zinc



Designed to prevent the nut from loosening.

Product Code	Size (mm)	Pack Qty (pcs)	Carton Qty (packs)	Pallet Qty (packs)
--------------	-----------	----------------	--------------------	--------------------

BOX

WSP6Z	M6	500	40	2560
WSP8Z	M8	250	40	2560
WSP10Z	M10	200	20	1280
WSP12Z	M12	200	16	1024
WSP16Z	M16	100	16	1024

TIMPAC

WSP6ZP	M6	30	10	-
WSP8ZP	M8	20	10	-
WSP10ZP	M10	10	10	-
WSP12ZP	M12	8	10	-

TYPE - WSH/PAK

SUB TYPE - WSH06/PAK23